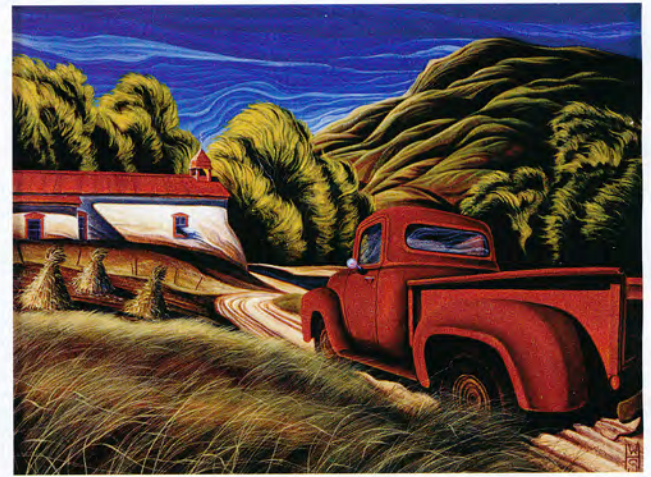




Centennial, acrylic, 16 x 12"



Catalina, acrylic, 8 x 10"



Back Roads, acrylic, 9 x 12"

Drawn to the land

The regional landscapes and villages of the West inspire artist William Haskell to create exquisite drybrush watercolor and acrylic works. Weathered adobe structures are drenched in a crisp, white light beneath Western mountain ranges, mesas and prairie lands in many of Haskell's colorful paintings. His focus on detail in his work goes beyond mere description of subject and draws the viewer into the painting for a more intimate connection with everyday forms and a sense of place.

"Drawing is the basis for my painting and it has been essential for me to continuously develop my drafting skills. With the use of drybrush techniques, I am able to take watercolor to a different level by working as translucently or opaquely as needed. I use 300-pound watercolor paper with a smooth,

hot press finish. I seal, dry-mount and apply an archival varnish to the finished painting. This removes the need for glass, which traditionally protects a watercolor. This allows the user to get closer to the work."

Haskell continues, "Whether the scene is in the American West or the Eastern seaboard, I look for a particular element of descriptive history. The American landscape is a vanishing land, ever-changing and evolving with our progress. I believe it is important to recall the past as we live in the present and move to the future. The landscape tells this history and it is important to record and preserve whenever possible. I find it interesting that there are generations that will never see these lands the way we do today. That progress and growth in an area often covers up a rich story that is truly the essence of an area. Across the country

we have historic villages and farmscapes that are shadowed by urban growth. I feel it is important to record these areas that not only document our experience but evoke nostalgia for a simpler time."

See paintings by Haskell in the exhibition *Southwest Treasures* presented by Jane Hamilton Fine Art, opening Friday, February 21, and hanging through February 28.

William Haskell

Represented by

Jane Hamilton Fine Art

2890 E. Skyline Drive, Suite 180

Tucson, AZ 85718

(520) 529-4886

www.janehamiltonfineart.com